



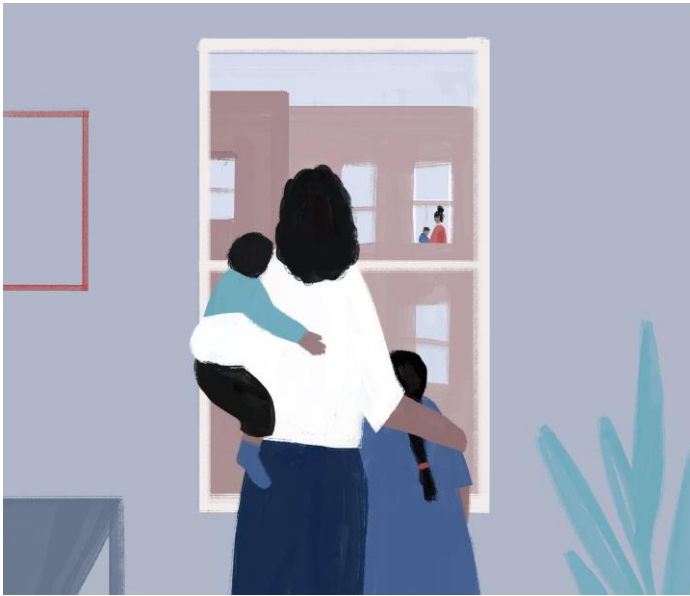
Hardship Grant Community Fund

Neema Women Community is a non-profit organisation created by women which aims to **support and empower women and families** from vulnerable and disadvantaged backgrounds, through:

Mental Wellness: counselling, therapies, well-being,

Victim support: abuse, domestic violence, violence against women and girls.....

Support services: welfare benefits, educational advice, food support, employment, legal advising, financial/debt support, ...



This grant represents the third round of the **Household Support Fund (HSF)**. It is a fixed amount of money available to **support households with essentials such as food, energy and essential goods and supplies such as water.**

Eligibility criteria:

- Being **on means-tested benefits** (evidence required).
- Be **living in Birmingham** - your council should be Birmingham City Council (Smethwick, Oldbury, West Bromwich, and Walsall are not accepted as they are not part of BCC).
- To be eligible for the scheme, you **must not have already received a Hardship grant since April 2022** – this means that you must have not benefited from previous rounds of the HSF. This will be thoroughly monitored.
- People with No Recourse to Public Funds are eligible if facing destitution.

All applications have to be made through a telephone/face-to-face appointment. To book an appointment please book a slot through the following link

<https://calendly.com/support-services-nwc/hardshipgrant>

Alternatively, contact us through supportservices@neemawomen.co.uk